

SLATEish

Recycled paper laminate tile.

Product Usage and Additional Information

Made from 100% post industrial waste paper laminate material. Slate-ish is suitable for all indoor vertical applications. Not recommended for exterior use. Mosaics are mesh paper backed for fast installation. Non-porous tile does not require sealing but should be coated with a water based polyurethane before grouting. Dry stacked tiles are available loose or pre-mounted on MDF backing for faster site installation in wall cladding applications. Backed panels can be custom sized.



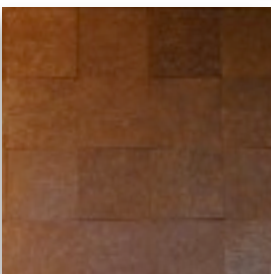
STRIPS

Random Length: 50 to 1200mm
Width: 8, 16, 24 mm
Profile: Light or Heavy



CUBES

32mm x 32mm
Profile: Light or Heavy



SQUARES

50mm x 50mm
100mm x 100mm
Profile: Light only



BARS

Length: 50, 100, 150mm
Width: 24mm
Profile: Light or Heavy



Description

PRE-MOUNTED : Standard panels on 5mm (3/16) hardboard.
Custom panels up to 1220mm x 2440 mm(48"x96").
Panels over 305mm x 610mm (12x24) on 1/4" MDF.
Panels over 610mm x610mm (24x24) on 1/2" MDF.

LOOSE TILES: To create your own design.

FINISHES : RAW (unsealed), SATIN, GLOSS.

COLORS: Soot, Moss, Ocean, Berry, Wheat, Bark, Chocolate.

PROFILES: Light (6mm max variation) & Heavy (up to 18mm variation)

www.slate-ish.com

info@slate-ish.com